

NEMTEK
Electric Fencing Products



Fence Cut Out Switch AA-COS/LED

Instruction Manual



INTRODUCTION

Nemtek Cut Out Switches can be used to isolate sections of your electric fence. They are useful during fault finding as you can separate the fence into manageable sections, particularly when the fence system is a large one.

Features

AA-COS/LED

- Designed for outdoor use
- Ideal for all electric fence installations
- Padlockable lever arm lock for security
- Easy store terminal nut tool supplied with the switch
- Integrated flashing LED array to indicate the voltage level on the fence

Specifications

AA-COS/LED

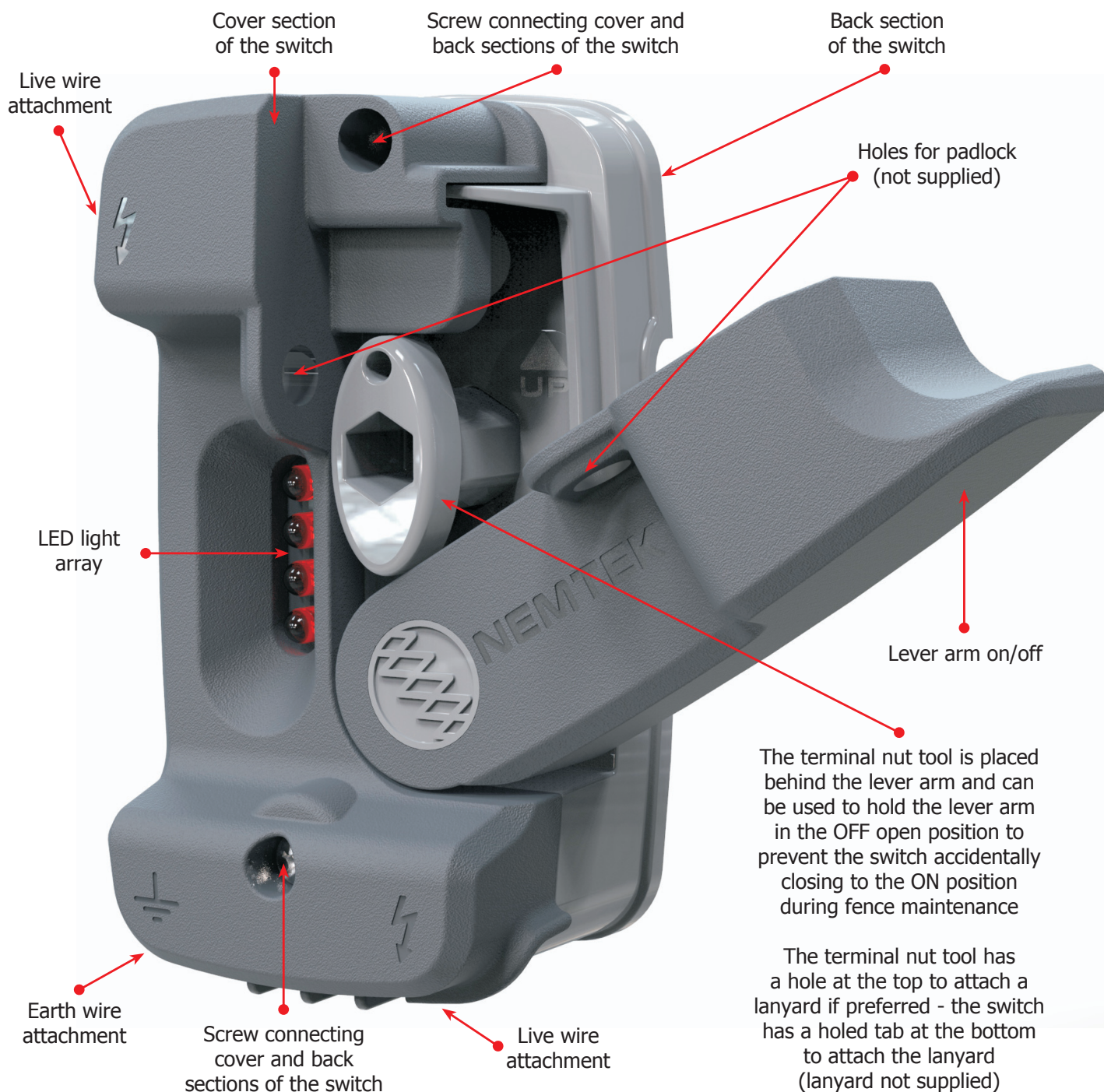
Materials:

- UV stabilized plastic and water tight compound
- Stainless Steel

LED Timed Light Array:

- Visible from up to 1km at night and 100m during the day
- No batteries required - uses minimal power from the fence
- Highly visible LEDs allow for a 120 degree viewing angle - this allows the light to shine into the secure area only
- Can operate from 0.9kV to 12kV
- Can be used with all Nemtek electric fence energizers

Components and Functionality



AA-COS/LED Lighting Functions

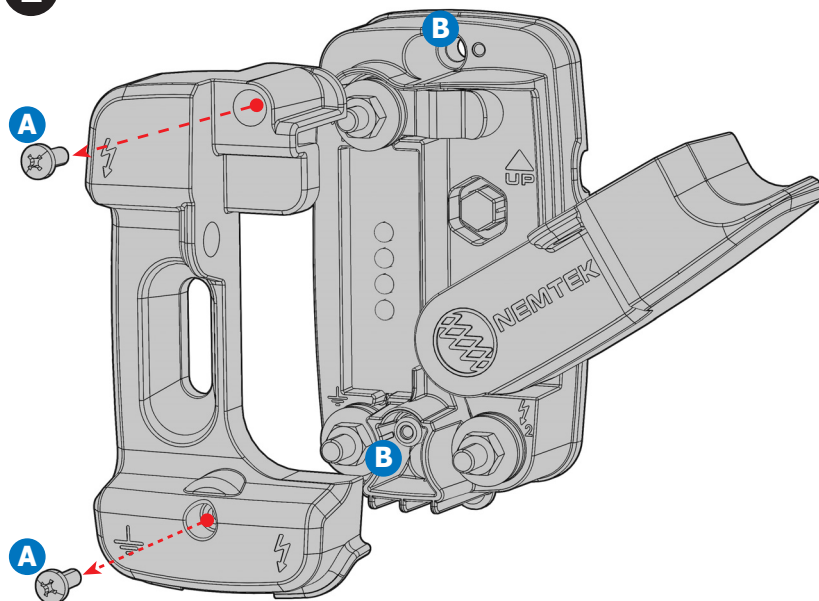
The frequency of the flashing LEDs indicates the voltage level on the fence. The longer the period between flashes, the lower the voltage on the fence. The intensity of the light remains the same so it can be seen from a distance irrespective of the fence voltage. It is installed between the earth and live wire to indicate the status and condition of the fence for peace of mind.

LED Flashing Rates

1. Flashing normally rate over $\sim 7.5\text{kV}$
2. Flashing at 25% slower than normal between $7.5\text{kV} \sim 3\text{kV}$
3. Flashing at 50% slower than normal between $3\text{kV} \sim 2.5\text{kV}$
4. Flashing at 75% slower than normal when less than $\sim 2.5\text{kV}$

Installation and Usage

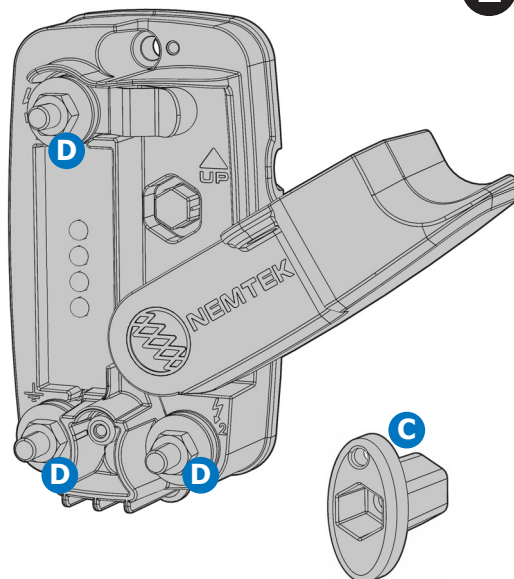
1



Remove the two screws (A) at the top and bottom of the switch and take off the switch cover to expose the mounting holes (B)

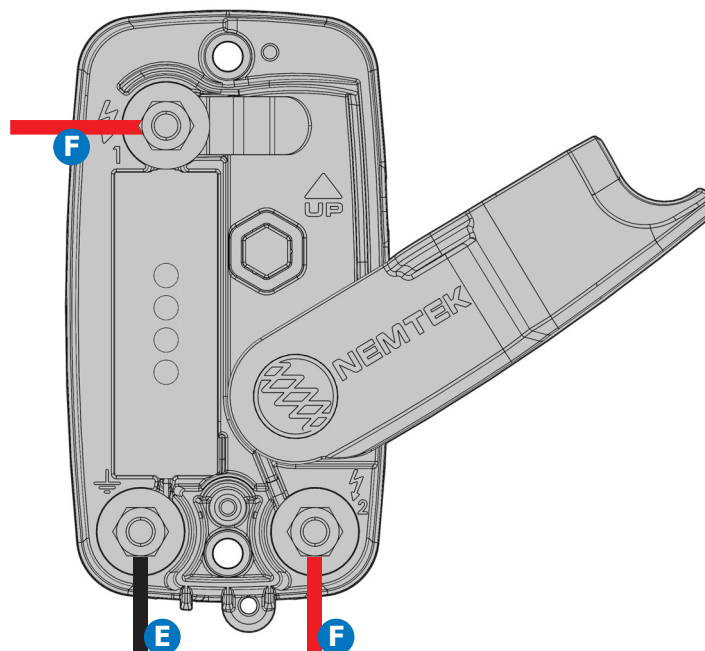
Please note: Mounting screws or bolts are not included

2



Mount the unit onto your preferred surface and use the terminal nut tool supplied (C) to loosen the nuts on the terminals (D)

3

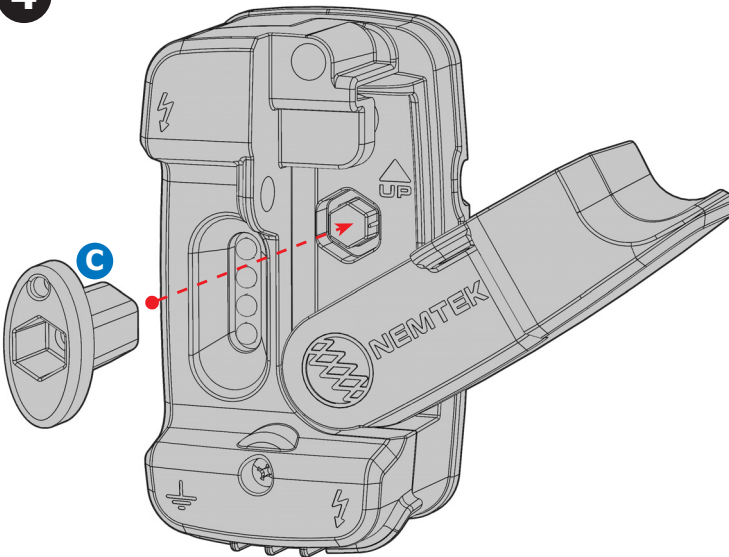


For the AA-COS/LED model, one earth wire (E) and two live wires (F) need to be connected

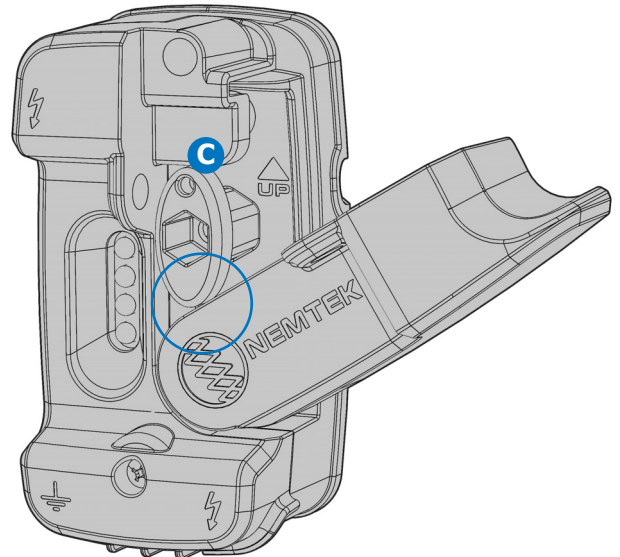
When all wires are connected and the terminal nuts tightened, reattach the cover section

Installation and Usage

4



As a safety feature, the lever arm can be 'locked' open (OFF position) using the terminal nut tool (C) to prevent accidental closing of the lever arm (ON position) when working on the fence



Place the terminal nut tool into its storage slot but leave the head of the tool sticking out to block the lever arm - use a padlock for extra protection

5



Padlock (G) in place with the lever arm closed (ON position)



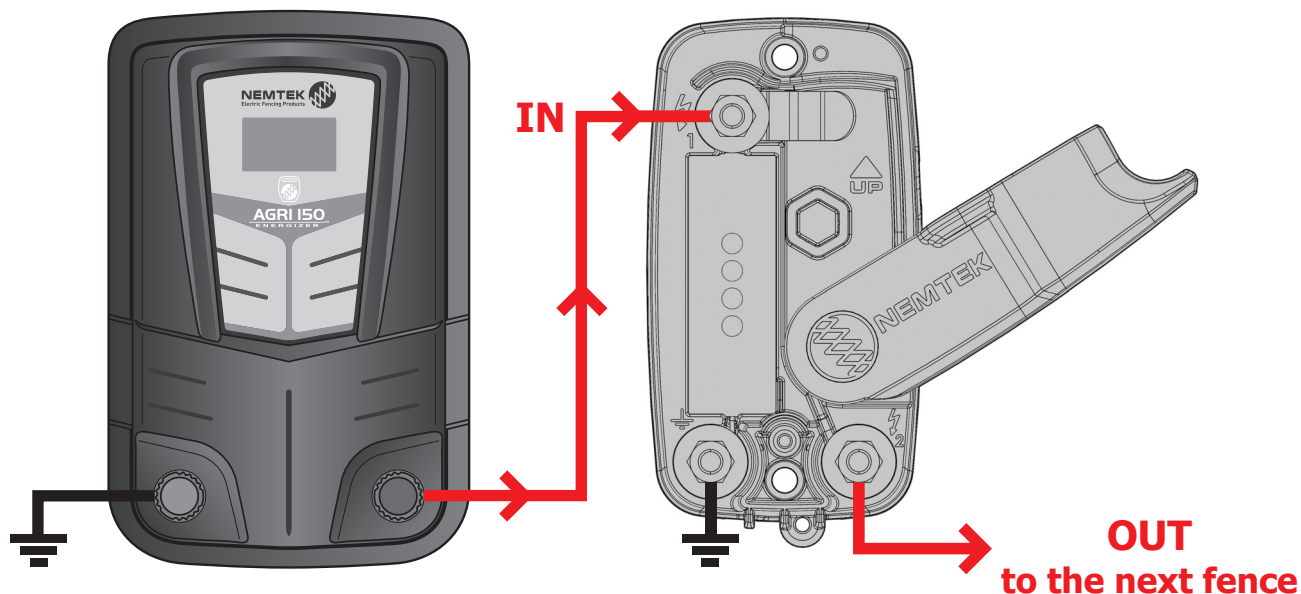
For the AA-COS/LED model use a rectangular padlock where possible as a standard padlock may obscure all of the LED lights

Please note: Use a padlock for security purposes at your own discretion - it is not a requirement for the functionality of the switch

Padlock (G) in place with the lever arm open (OFF position) and the terminal nut tool (C) preventing it from closing accidentally

Using the Lights as a Diagnostic Tool

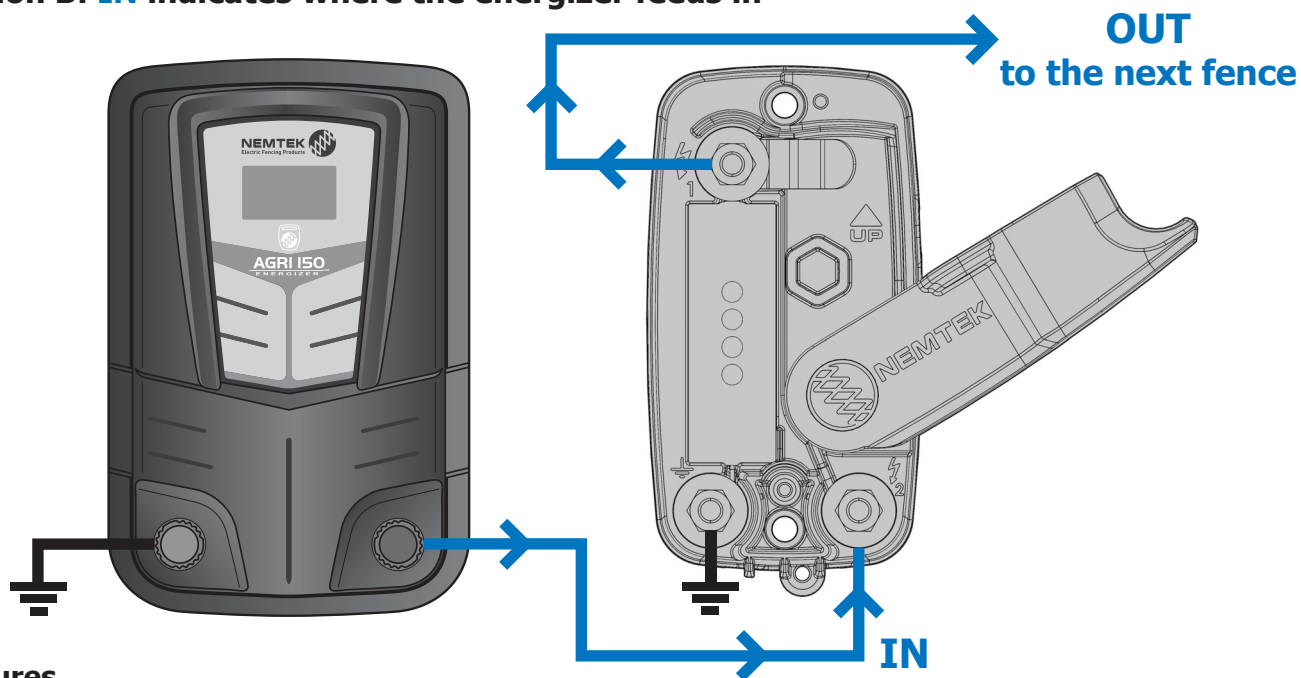
Option A: IN indicates where the energizer feeds in



Features

- The lights will flash whether the switch is open or closed - this shows that there is power to the switch
- If the energizer is on and the lights are off:
 - There is a problem on the fence
 - If the lights come on when the switch is opened then the fault is after the switch
 - Alternatively the earthing is bad

Option B: IN indicates where the energizer feeds in



Features

- The lights will flash only when the switch is closed - this shows that there is power to the switch
- If the energizer is on and the lights are off when the switch is closed:
 - There is a problem on the fence
 - Alternatively the earthing is bad

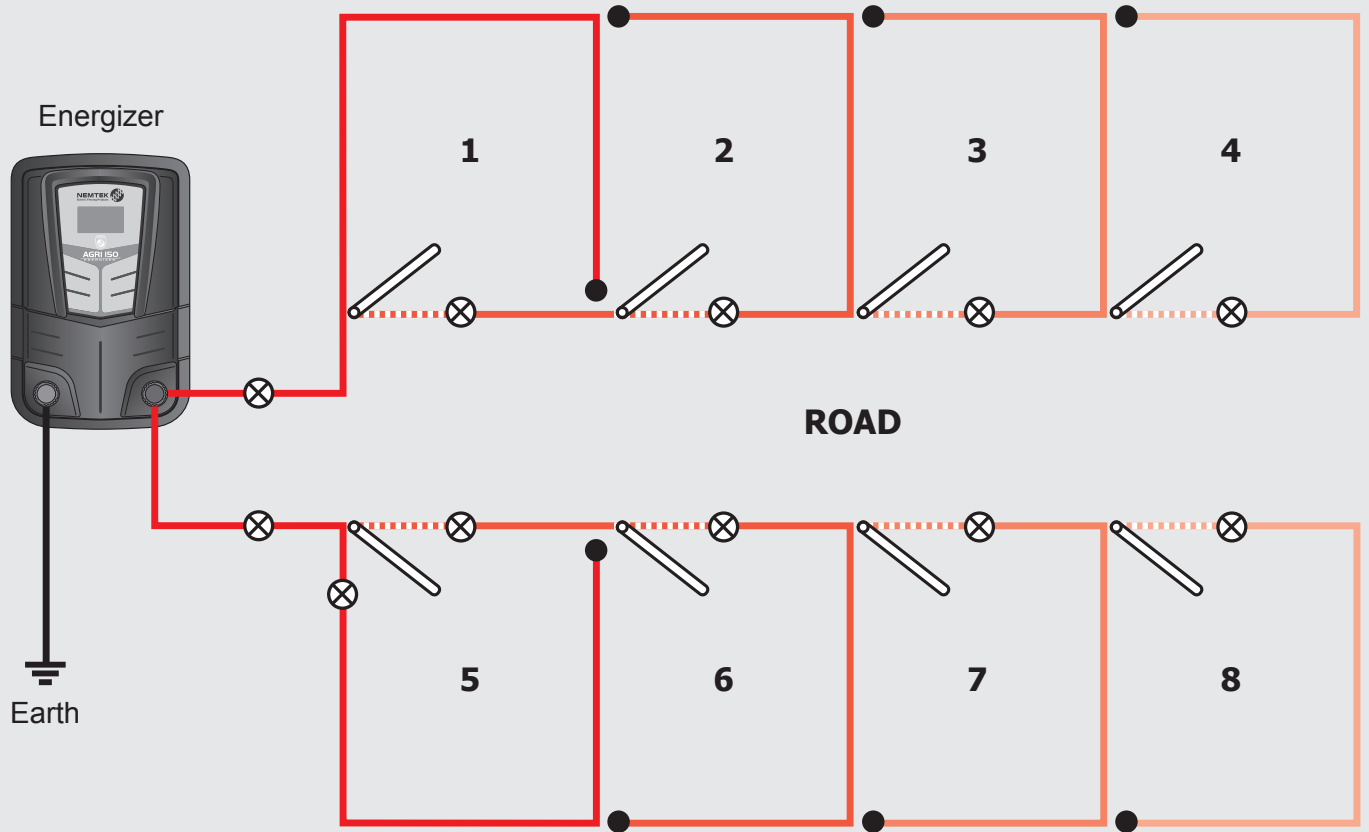
Cut Out Switch Fence Layout Example

⊗ Cut-out switch

● Termination Point

⎓ Gate

..... Under Gate Feed



WARRANTY

Unless otherwise specified all Nemtek energizers have a 2 year warranty and all other fencing components have a 1 year warranty from date of sale against defects due to faulty workmanship or materials. Nemtek (Pty) Ltd will, at its discretion, either repair or replace a product that proves to be defective.

Nemtek (Pty) Ltd does not guarantee that the operation of the product will be uninterrupted and totally error free. Faulty products must be returned to one of the Nemtek Group outlets. The buyer shall pay all shipping and other charges for the return of the product to Nemtek (Pty) Ltd.

LIMITATION OF WARRANTY

The warranty does not apply to defects resulting from acts of God, modifications made by the buyer or any third party, misuse, neglect, abuse, accident or mishandling.

EXCLUSIVE REMEDIES

The remedies provided herein are Nemtek (Pty) Ltd's sole liability and the buyers sole and exclusive remedies for breach of warranty. Nemtek (Pty) Ltd shall not be liable for any special, incidental, consequential, direct or indirect damages, whether based on contract, tort, or any other legal theory. The foregoing warranty is in lieu of any and all other warranties, whether expressed, implied, or statutory, including but not limited to warranties of merchantability and suitability for a particular purpose.



AA-COS/LED 02/25 Rev.1.0

www.nemtek.com